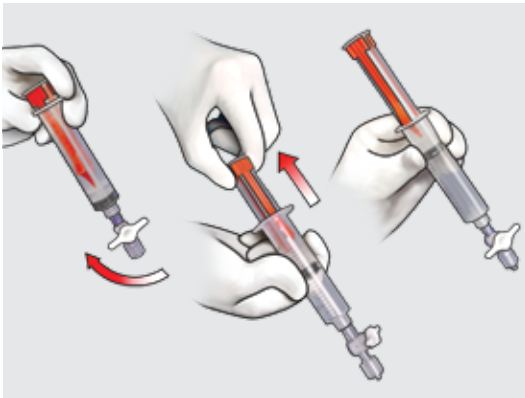


# EchoTip® Ultra

ENDOBONCHIAL HD ULTRASOUND NEEDLE

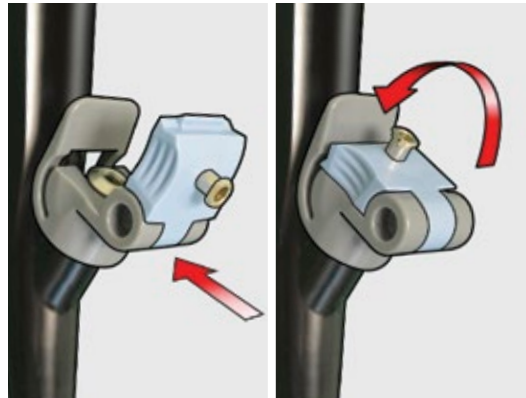
## System Prep 1



### OPTIONAL - If using the syringe for cell collection

To prepare the syringe, begin with the stopcock in the open position, depress the plunger locks and fully advance the plunger into the syringe. Turn the stopcock to the closed position and pull the plunger back to the desired setting, creating a vacuum.

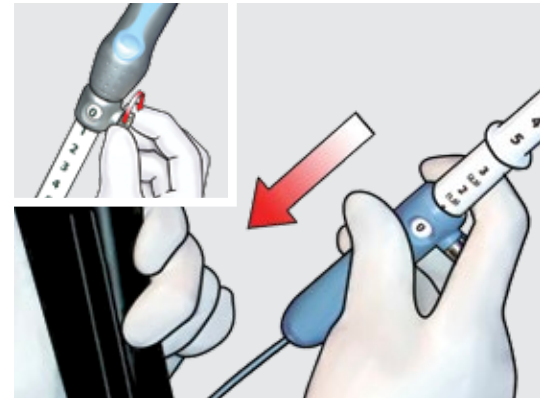
## System Prep 2



### OLYMPUS USERS ONLY

Slide the adapter, in the open position, onto the accessory channel of the endoscope ensuring that the base of the adapter slides under the accessory channel's metal hub. Close the adapter, ensuring it is locked.

## Step 1



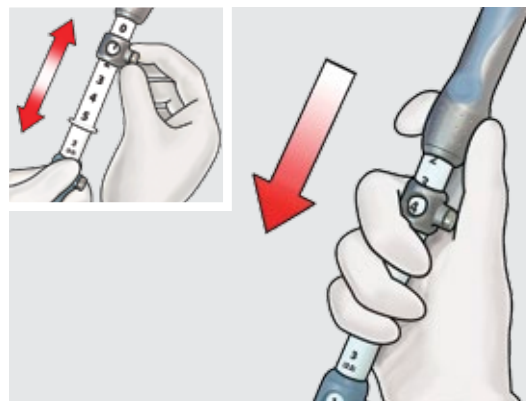
Identify the desired target site. Ensure the needle is retracted into the sheath before inserting it into the endoscope. Advance the device into the endoscope until the fittings meet. Attach the device by rotating the handle clockwise.

## Step 2



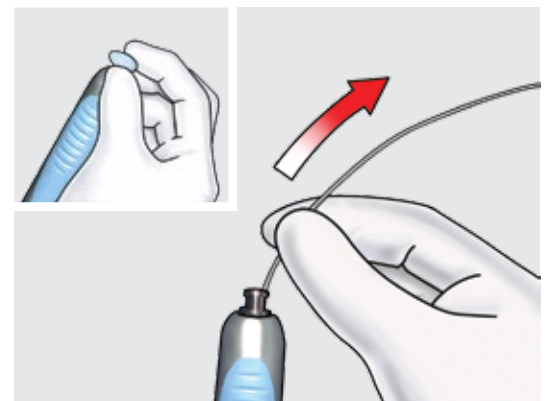
Adjust the sheath to the desired position until it has emerged from the working channel of the endoscope.

## Step 3



Set the needle extension to the desired length by loosening the thumbscrew on the safety ring, and advance until the desired reference mark appears in the window, then tighten the thumbscrew. Advance the needle into the lesion.

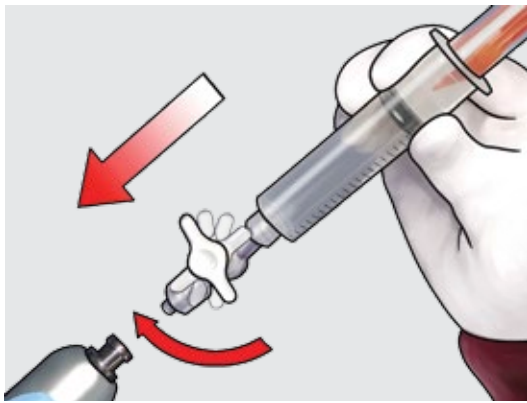
## Step 4



Standard vacuum syringe techniques may be applied for cell collection or, if desired, other techniques that may or may not incorporate the use of the stylet may be used.

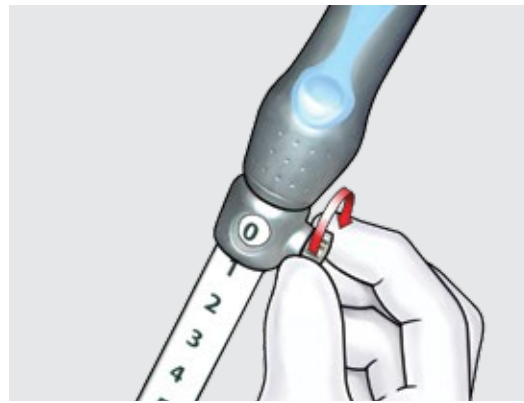
Remove the stylet by gently pulling back on the stylet hub. Preserve the stylet if additional cell collection is desired later. If using a syringe, follow Step 5.

## Step 5



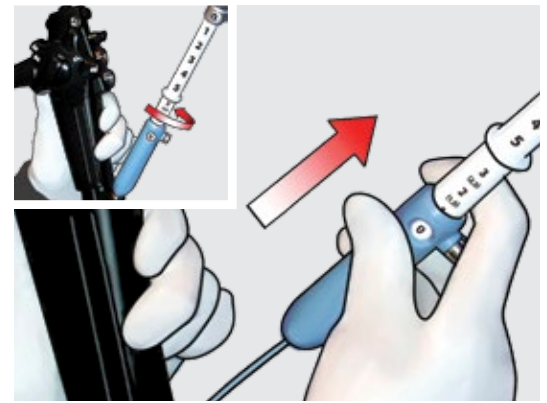
Attach the syringe to the device and open the stopcock to aspirate cells. Move the needle handle back and forth within the biopsy site. Upon completion of cell collection, turn the stopcock to the closed position.

## Step 6



Retract the needle completely into the sheath and lock the thumbscrew on the safety ring at the 0 cm mark.

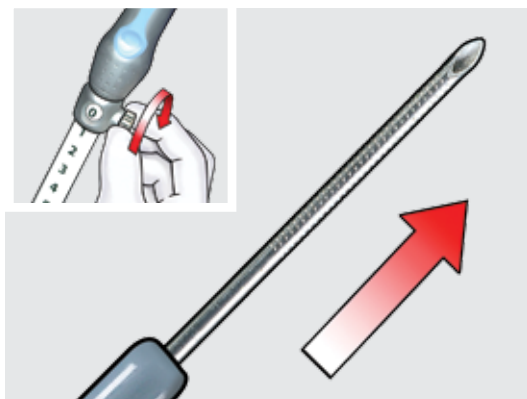
## Step 7



Disconnect the needle from the fitting on the scope by rotating the handle counterclockwise and withdraw the entire device from the endoscope.

Pentax users have an additional option for removing the needle between passes; refer to the instructions for use for further details.

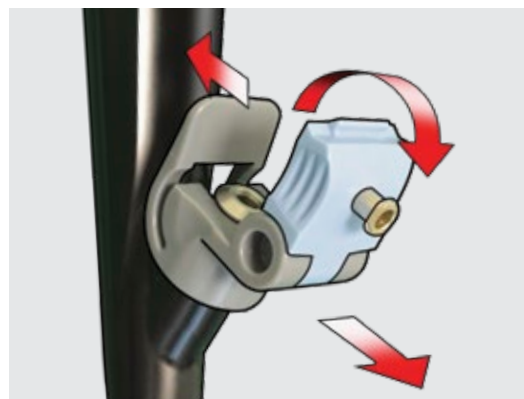
## Step 8



Unlock the thumbscrew on the safety ring and extend the needle. An empty syringe or stylet can be used to expel the specimen. Prepare the sample per institutional guidelines.

Additional samples may be obtained by repeating steps 1-8.

## Step 9



### OLYMPUS USERS ONLY

To remove the adapter from the endoscope upon completion of the procedure, pull back the on the locking clip, lift the top and slide off the endoscope.

Refer to current instructions for use for detailed information.

### Customer Service

**EMEA:** EDI - [www.cookmedical.com/edi.do](http://www.cookmedical.com/edi.do)  
 Distributors: +353 61239240, [ssc.distributors@cookmedical.com](mailto:ssc.distributors@cookmedical.com)  
 Austria: +43 179567121, [oe.orders@cookmedical.com](mailto:oe.orders@cookmedical.com)  
 Belgium: +32 27001633, [be.orders@cookmedical.com](mailto:be.orders@cookmedical.com)  
 Denmark: +45 38487607, [da.orders@cookmedical.com](mailto:da.orders@cookmedical.com)  
 Finland: +358 972519996, [fi.orders@cookmedical.com](mailto:fi.orders@cookmedical.com)  
 France: +33 171230269, [fr.orders@cookmedical.com](mailto:fr.orders@cookmedical.com)  
 Germany: +49 6950072804, [de.orders@cookmedical.com](mailto:de.orders@cookmedical.com)  
 Hungary: +36 17779199, [hu.orders@cookmedical.com](mailto:hu.orders@cookmedical.com)  
 Ireland: +353 61239252, [ie.orders@cookmedical.com](mailto:ie.orders@cookmedical.com)  
 Italy: +39 0269682853, [it.orders@cookmedical.com](mailto:it.orders@cookmedical.com)  
 Netherlands: +31 202013367, [nl.orders@cookmedical.com](mailto:nl.orders@cookmedical.com)  
 Norway: +47 23162968, [no.orders@cookmedical.com](mailto:no.orders@cookmedical.com)  
 Spain: +34 912702691, [es.orders@cookmedical.com](mailto:es.orders@cookmedical.com)  
 Sweden: +46 858769468, [se.orders@cookmedical.com](mailto:se.orders@cookmedical.com)  
 Switzerland - French: +41 448009609, [fr.orders@cookmedical.com](mailto:fr.orders@cookmedical.com)  
 Switzerland - Italian: +41 448009609, [it.orders@cookmedical.com](mailto:it.orders@cookmedical.com)  
 Switzerland - German: +41 448009609, [de.orders@cookmedical.com](mailto:de.orders@cookmedical.com)  
 United Kingdom: +44 2073654183, [uk.orders@cookmedical.com](mailto:uk.orders@cookmedical.com)

[cookmedical.com](http://cookmedical.com)

**Americas:** EDI - [www.cookmedical.com/edi.do](http://www.cookmedical.com/edi.do)  
 Phone: +1 812.339.2235, 800.457.4500, Fax: 800.554.8335  
 E-mail: [orders@cookmedical.com](mailto:orders@cookmedical.com)

**Australia:**  
 Phone: +61 734346000, 1800777222, Fax: +61 734346001, 1800077283  
 E-mail: [cau.custserv@cookmedical.com](mailto:cau.custserv@cookmedical.com)

